

Customer Information



Copyright © All rights reserved

Subject to change without notice. Errors and omissions excepted.

Printed by MO.SCHULZ at 03:07:47 EST 29.06.2020

AM_F-AFTM_LEDDL116-SP63W12/24V_CustInfo RL 2020-06-23

9C1 4209962-EN-00

SP_SSL_LEDDL104-CB 68W 12/24V Cust. Info

Released
ECM

SP SSL&EL München 700
Moritz Schulz AMW

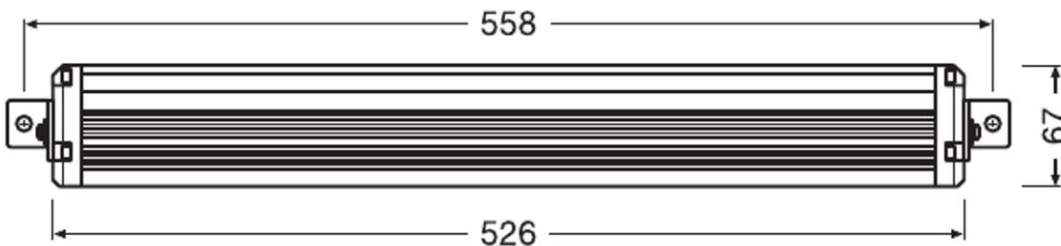
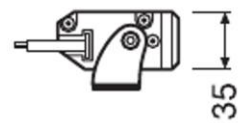
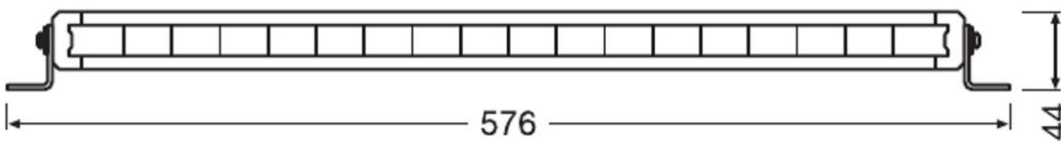
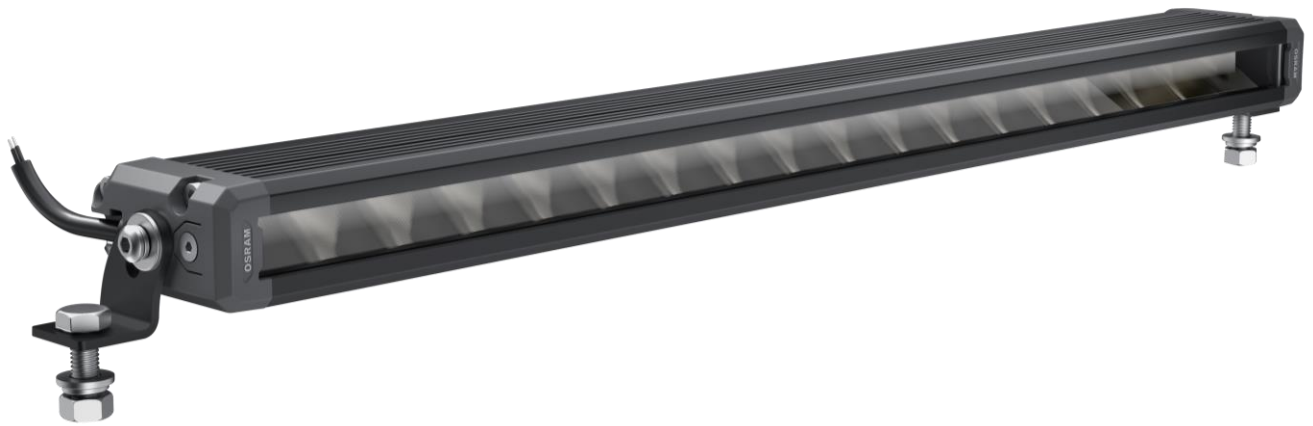
Template: ZOT 10000028

External no.:

Page 1 of 4

OSRAM GmbH: Chairman of the Supervisory Board: Peter Bauer; Managing Directors: Dr. Olaf Berlien (Chairman), Kathrin Dahnke, Dr. Stefan Kampmann;
Registered office: Munich; Commercial registry: Munich, HRB 201526; WEEE-Reg.-No. DE 71568000

Lightbar VX500-SP - Customer Information Sheet LEDDL116-SP 12/24V



#OSRAM OLQ (V)
#700 #MO.SCHULZ
#AMW #AM_F-AFTM_LEDDL116-SP63W12/24V_CustInfo #
2020-06-233
#RL-Released
9C1 4209962-EN-00

Customer Information



Copyright © All rights reserved

Subject to change without notice. Errors and omissions excepted.

Printed by MO.SCHULZ at 03:07:47 EST 29.06.2020

AM_F-AFTM_LEDDL116-SP63W12/24V_CustInfo RL 2020-06-23

9C1 4209962-EN-00

SP_SSL_LEDDL104-CB 68W 12/24V Cust. Info

Released
ECM

SP SSL&EL München 700
Moritz Schulz AMW

Template: ZOT 10000028

External no.:

Page 2 of 4

OSRAM GmbH: Chairman of the Supervisory Board: Peter Bauer; Managing Directors: Dr. Olaf Berlien (Chairman), Kathrin Dahnke, Dr. Stefan Kampmann;
Registered office: Munich; Commercial registry: Munich, HRB 201526; WEEE-Reg.-No. DE 71568000

General tolerances in accordance with ISO 2768-v (Allgemeine Toleranzen nach ISO 2768-v)

#OSRAM OLQ(V)

#700 #MO.SCHULZ #AMW #AM_F-AFTM_LEDDL116-SP63W12/24V_CustInfo #

2020-06-23

#RL-Released

9C1 4209962-EN-00

AM_F-AFTM_LEDDL116-SP63W12/24V_CustInfo RL 2020-06-23

9C1 4209962-EN-00

SP_SSL_LEDDL104-CB 68W 12/24V Cust. Info

Released
ECM

SP SSL&EL München 700
Moritz Schulz AMW

Template: ZOT 10000028

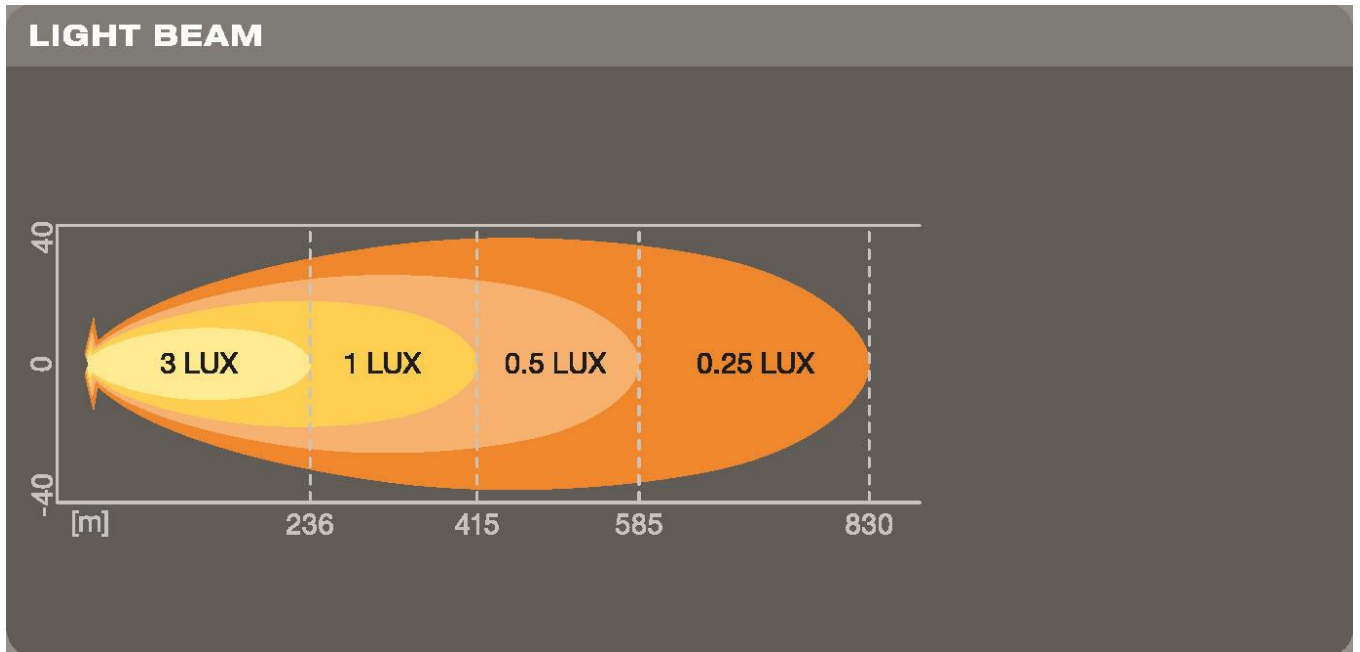
External no.:

Page 3 of 4

OSRAM GmbH: Chairman of the Supervisory Board: Peter Bauer; Managing Directors: Dr. Olaf Berlien (Chairman), Kathrin Dahnke, Dr. Stefan Kampmann;
Registered office: Munich; Commercial registry: Munich, HRB 201526; WEEE-Reg.-No. DE 71568000

#OSRAM OLQ(V)
#700 #MO.SCHULZ
#AMW #AM_F-AFTM_LEDDL116-SP63W12/24V_CustInfo #

Light distribution (Lichtverteilung)



Packaging content (Verpackungsinhalt)

No.	Part Name	Description	Qty
1	LED Bar	Housing: AL with black powder painting	1
2	L-Bracket	Aluminium	2
3	Screw M6x10	Stainless Steel	2
4	Spring Washer M6	Stainless Steel	2
5	Rubber Washer M6	Rubber	2
6	Screw M8x30	Stainless Steel	2
7	Spring Washer M8	Stainless Steel	2
8	Plain Washer M8	Stainless Steel	4
9	Nut M8	Stainless Steel	2
10	Rear Bracket	Aluminium	2
11	Rubber Spacers	Rubber	2
12	Screw M6x15	Stainless Steel	2
13	Nut M6	Stainless Steel	2
14	User Manual		1

Standards and regulations (Normen und Vorschriften)

EMC/EMI	ECE R10
IP Class	IP67
ECE	ECE R10, R112
Other legal requirements	SAE

2020-06-23
#RL-Released
9C1 4209962-EN-00

AM_F-AFTM_LEDDL116-SP63W12/24V_CustInfo RL 2020-06-23

9C1 4209962-EN-00

SP_SSL_LEDDL104-CB 68W 12/24V Cust. Info

Released
ECM

SP SSL&EL München 700
Moritz Schulz AMW

Template: ZOT 10000028

External no.:

Page 4 of 4

OSRAM GmbH: Chairman of the Supervisory Board: Peter Bauer; Managing Directors: Dr. Olaf Berlien (Chairman), Kathrin Dahnke, Dr. Stefan Kampmann;
Registered office: Munich; Commercial registry: Munich, HRB 201526; WEEE-Reg.-No. DE 71568000

Electrical and photometrical data (Elektrische und lichttechnische Daten)

Characteristics (Messwert)	Symbol	Unit (Einheit)	Major / Minor	Tolerance (Toleranz) [%]
Voltage (Spannung)	U	V	12/24V	9V-30V
Wattage (Leistung) @25°C	P	W	63W (typ.)	±10%
Steady State luminous flux (Lichtstrom) (30min. @25°C & 13,2V Goniometer: Vertical & horizontal : ±90°)	Φ	lm	2800lm	±10%

Life time (Lebensdauer)

Test (Prüfung)			
Life time average (@25°C)	T _c	h	5.000

Further specifications (Weitere Spezifikationen)

Test (Prüfung)	Rated value (Sollwert)	Test specification (Norm)
Color temperature (Farbtemperatur)	Cold White (6000K)	+/- 500K
Ambient Temperature range (T _a)	25°C	-30°C~+65°C
Storage Temperature range (T _s)	25°C	-40°C~+85°C
Derating, dimming	NTC overheat protection	
Light distance @1lx	≥415m	
Number of LED's	18 pcs.	
Weight (light + application material)	1435g	
Connector	No	
Wire length	45cm	
Polarity	Polarity Protection	

Process of manufacturing (Fertigungsprozess)

This product is designed and manufactured for the Automotive Aftermarket. Please consider the product specification to match the customer requirements. Dieses Produkt wurde für den Aftermarket entwickelt und produziert. Es ist unabdingbar, die Produktspezifikation mit den Kundenanforderungen abzugleichen.

Successive listing of changes (Änderungsfortschreibung)

Issue (Ausgabe):	Reason for change (Änderungsgrund):
05.06.2020	First Version

#OSRAM OLQ(V) #700 #MO.SCHULZ #AMW #AM_F-AFTM_LEDDL116-SP63W12/24V_CustInfo #2020-06-23 #RL-Released 9C1 4209962-EN-00