

SP_SSL_LEDDL110-CB 12/24V Cust. Info

RL 2020-06-07

9C1 4216804-EN-00

Released

SP SSL&EL München 700

ECM

Moritz Schulz AMW

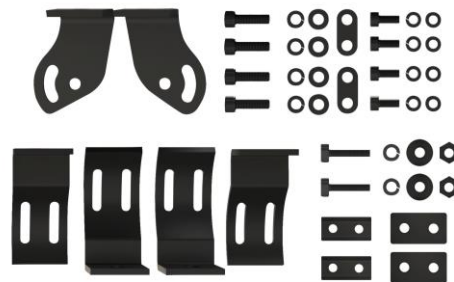
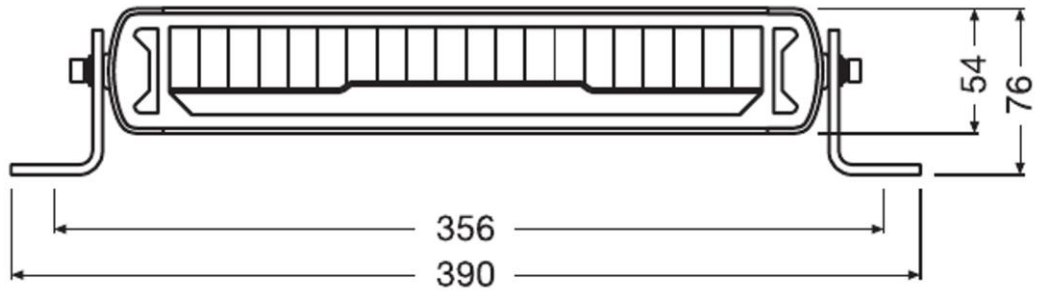
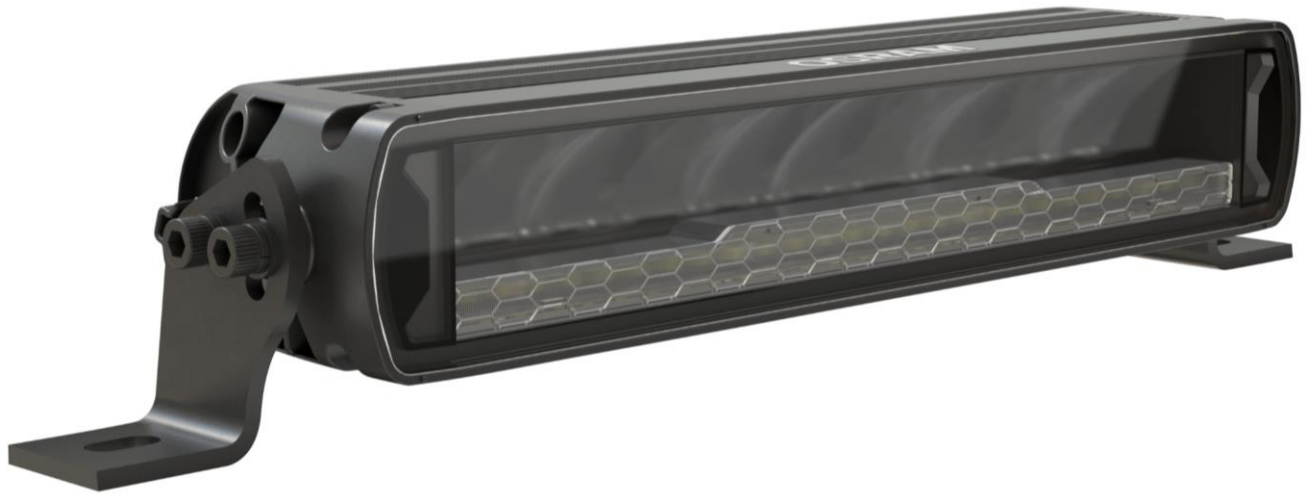
Template: ZOT 10000028

External no.:

Page 1 of 5

OSRAM GmbH: Chairman of the Supervisory Board: Peter Bauer; Managing Directors: Dr. Olaf Berlien (Chairman), Kathrin Dahnke, Dr. Stefan Kampmann;
Registered office: Munich; Commercial registry: Munich, HRB 201526; WEEE-Reg.-No. DE 71568000

Lightbar MX250-CB – Customer Information Sheet LEDDL110-CB 12/24V



Customer Information



Copyright © All rights reserved

Subject to change without notice. Errors and omissions excepted.

Printed by MO.SCHULZ at 08:43:57 EST 08.06.2020

SP_SSL_LEDDL110-CB 12/24V Cust. Info

RL 2020-06-07

9C1 4216804-EN-00

Released

SP SSL&EL München 700

ECM

Moritz Schulz AMW

Template: ZOT 10000028

External no.:

Page 2 of 5

OSRAM GmbH: Chairman of the Supervisory Board: Peter Bauer; Managing Directors: Dr. Olaf Berlien (Chairman), Kathrin Dahnke, Dr. Stefan Kampmann;
Registered office: Munich; Commercial registry: Munich, HRB 201526; WEEE-Reg.-No. DE 71568000

General tolerances in accordance with ISO 2768-v (Allgemeine Toleranzen nach ISO 2768-v)

OSRAM OLQ(V)
#OSRAM
#MO.SCHULZ
#700
#AMW
#SP_SSL_LEDDL110-CB 12/24V Cust. Info

2020-06-07
#RL-Released
9C1 4216804-EN-00

SP_SSL_LEDDL110-CB 12/24V Cust. Info

RL 2020-06-07

9C1 4216804-EN-00

Released

SP SSL&EL München 700

ECM

Moritz Schulz AMW

Template: ZOT 10000028

External no.:

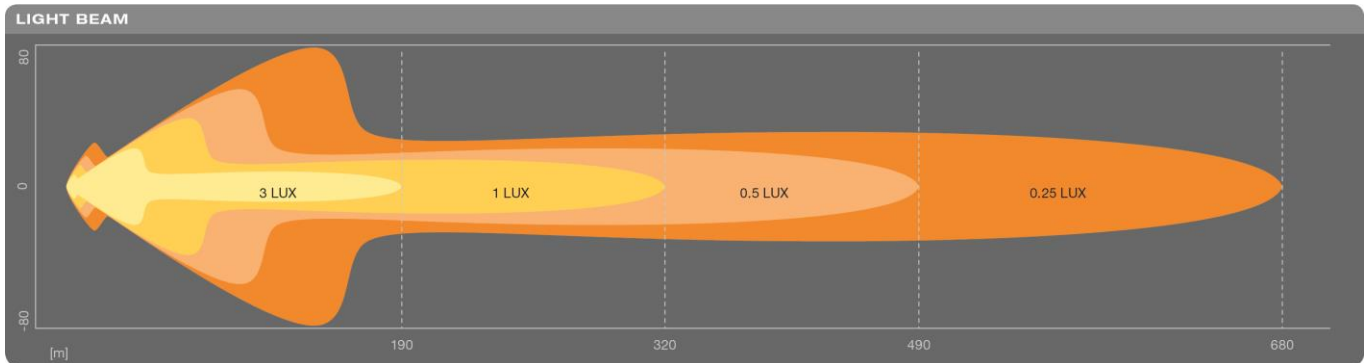
Page 3 of 5

OSRAM GmbH: Chairman of the Supervisory Board: Peter Bauer; Managing Directors: Dr. Olaf Berlien (Chairman), Kathrin Dahnke, Dr. Stefan Kampmann;
Registered office: Munich; Commercial registry: Munich, HRB 201526; WEEE-Reg.-No. DE 71568000

#OSRAM OLQ(V)
#700 #MO.SCHULZ

#AMW #SP_SSL_LEDDL110-CB 12/24V Cust. Info
2020-06-07
#RL-Released
9C1 4216804-EN-00

Light distribution (Lichtverteilung)



Packaging content (Verpackungsinhalt)

No.	Part Name	Description	Qty
1	Driving Light - Lightbar	Housing: AL with black powder painting	1
2	Bottom bracket	Stainless Steel	2
3	Side block of back bracket	Stainless Steel	2
4	Rubber Mat (Rectangular)	Rubber	2
5	M5x12 Screw	Stainless Steel	4
6	M5 Spring Washer	Stainless Steel	4
7	M5 Flat Washer	Stainless Steel	4
8	Back bracket	Stainless Steel	2
9	R-side bracket	Stainless Steel	1
10	L-side bracket	Stainless Steel	1
11	M6x14 Screw	Stainless Steel	4
12	M6 Spring Washer	Stainless Steel	4
13	M6 Flat Washer	Stainless Steel	4
14	M8 outer hexagon screw	Stainless Steel	2
15	Plastic gasket (long)	Plastic	2
16	Washer	Stainless Steel	2
17	M8 Spring Washer	Stainless Steel	2
18	M8 Hexagonal nut	Stainless Steel	2
19	Connector and wire		1
20	Pigtail and wire		1
21	User Manual		1

Standards and regulations (Normen und Vorschriften)

EMC/EMI	ECE R10
IP Class	IP69K
ECE	ECE R10, R7, R112
Other legal requirements	RoHS, REACH

SP_SSL_LEDDL110-CB 12/24V Cust. Info

RL 2020-06-07

9C1 4216804-EN-00

Released

SP SSL&EL München 700

ECM

Moritz Schulz AMW

Template: ZOT 10000028

External no.:

Page 4 of 5

OSRAM GmbH: Chairman of the Supervisory Board: Peter Bauer; Managing Directors: Dr. Olaf Berlien (Chairman), Kathrin Dahnke, Dr. Stefan Kampmann;
Registered office: Munich; Commercial registry: Munich, HRB 201526; WEEE-Reg.-No. DE 71568000

Electrical and photometrical data (Elektrische und lichttechnische Daten)

Characteristics (Messwert)	Symbol	Unit (Einheit)	Major / Minor	Tolerance (Toleranz) [%]
Voltage (Spannung)	U	V	12/24V	9V-33V
Wattage (Leistung) @25°C	P	W	Driving light: 45W Position light: 1W	±10%
Steady State luminous flux (Lichtstrom) (30min. @25°C & 13,2V Goniometer: Vertical & horizontal : ±90°)	Φ	lm	Driving light: 2700lm	±10%

Life time (Lebensdauer)

Test (Prüfung)			
Life time average (@25°C)	T _c	h	5.000

Further specifications (Weitere Spezifikationen)

Test (Prüfung)	Rated value (Sollwert)	Test specification (Norm)
Color temperature (Farbtemperatur)	Cold White (6000K)	+/- 500K
Ambient Temperature range (T _a)	25°C	-40°C~+85°C
Storage Temperature range (T _s)	25°C	-40°C~+105°C
Light distance @1lx	≥320m	
Number of LED's	Driving light: 10 pcs. Position light: 26 pcs.	
Weight (light + application material)	2021g	±101g
Connector	DT06-3S PBT water proof	
Wire length	110/20cm	
Polarity	Polarity Protection	

Process of manufacturing (Fertigungsprozess)

This product is designed and manufactured for the Automotive Aftermarket. Please consider the product specification to match the customer requirements. Dieses Produkt wurde für den Aftermarket entwickelt und produziert. Es ist unabdingbar, die Produktspezifikation mit den Kundenanforderungen abzugleichen.

Successive listing of changes (Änderungsfortschreibung)

Issue (Ausgabe):	Reason for change (Änderungsgrund):
05.06.2020	First Version

#OSRAM OLQ(V)
#700 #MO.SCHULZ

#SP_SSL_LEDDL110-CB 12/24V Cust. Info
#AMW
#2020-06-07
#RL-Released
#9C1 4216804-EN-00

Customer Information



Copyright © All rights reserved

Subject to change without notice. Errors and omissions excepted.

Printed by MO.SCHULZ at 08:43:57 EST 08.06.2020

SP_SSL_LEDDL110-CB 12/24V Cust. Info

RL 2020-06-07

9C1 4216804-EN-00

Released

SP SSL&EL München 700

ECM

Moritz Schulz AMW

Template: ZOT 10000028

External no.:

Page 5 of 5

OSRAM GmbH: Chairman of the Supervisory Board: Peter Bauer; Managing Directors: Dr. Olaf Berlien (Chairman), Kathrin Dahnke, Dr. Stefan Kampmann;
Registered office: Munich; Commercial registry: Munich, HRB 201526; WEEE-Reg.-No. DE 71568000

OSRAM OLQ(V)
#OSRAM
#MO.SCHULZ
#700
#AMW
#SP_SSL_LEDDL110-CB 12/24V Cust. Info

2020-06-07
#RL-Released
9C1 4216804-EN-00